

The home of the turntable

**THE VINYL ENGINE®**

For more turntable manuals and setup information  
please visit [www.vinylengine.com](http://www.vinylengine.com)

STEREO TURNTABLE  
**PL-12D-II**  
KUT, KCT

<ART-117-0>

# *Service Manual*



 **PIONEER®**

# CONTENTS

1.	SPECIFICATIONS.....	2
2.	EXPLODED VIEW	
2.1	Main panel .....	3
2.2	Tone arm assembly (PPD-520) .....	5
2.3	Belt guide assembly (KXA-093) .....	5
2.4	Function lever assembly (PXA-005) .....	6
2.5	Speed selector assembly (KXA-296) .....	6
2.6	Motor .....	7
2.7	Cabinet .....	8
2.8	Packing .....	9

1. SPECIFICATIONS

MOTOR AND TURNTABLE

Motor	4-pole synchronous
Turntable driver	Belt-driven
Speed	Two speeds: 33-1/3, 45rpm
Wow and flutter	0.08% (WRMS) or less
S/N	48dB or more
Turntable platter	30cm (12 in.) diameter die-cast aluminum alloy
Tonearm	Static balance type pipe arm
Effective arm length	22.1cm
Usable cartridge weight	4 to 10g

SUBFUNCTIONS

- Anti-skating device
- Lateral balance
- Viscous-damped arm elevation
- Plug-in type light aluminum head shell
- Counterweight with tracking force adjustment gauge
- Overhang checker

MISCELLANEOUS

Power requirements	AC 120V (60Hz)
Power consumption	11W
Dimensions	430(W) x 167(H) x 349(D)mm 17(W) x 6-9/16(H) x 13-3/4(D) in.
Weight	7.5kg, 16 lb 8oz.

ACCESSORIES

Lubricator	1
Screwdriver	1
EP record adaptor	1
Sub weight	1
Cartridge mounting screws	6
Cartridge mounting washers	2
Cartridge mounting nuts	2
Operating Instructions	1

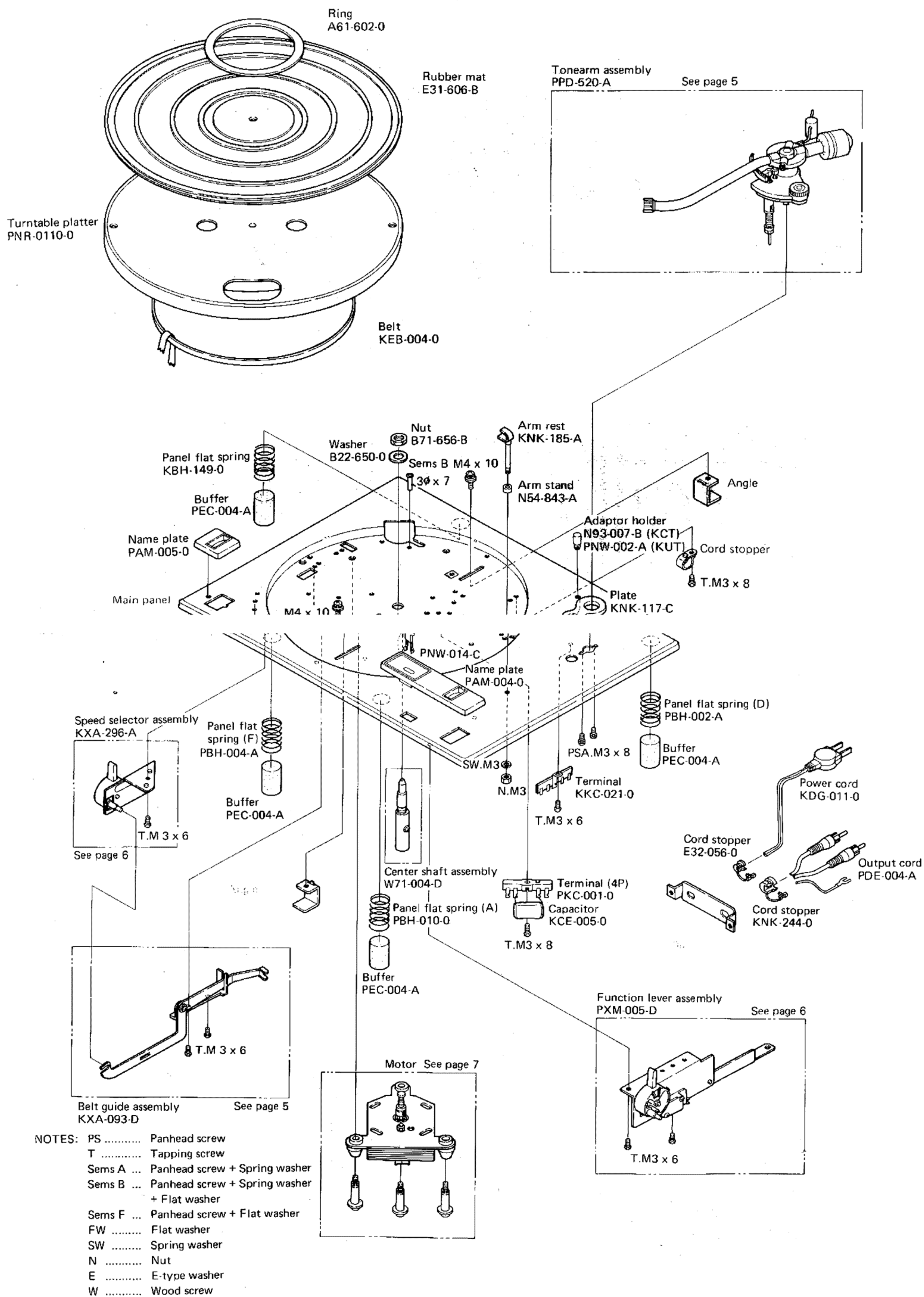
NOTES:

- o Above specifications refer to combination of turntable PL-12D-II with the Pioneer Phono cartridge PC-30.
- o Specifications and the design subject to possible modification without notice due to improvements.

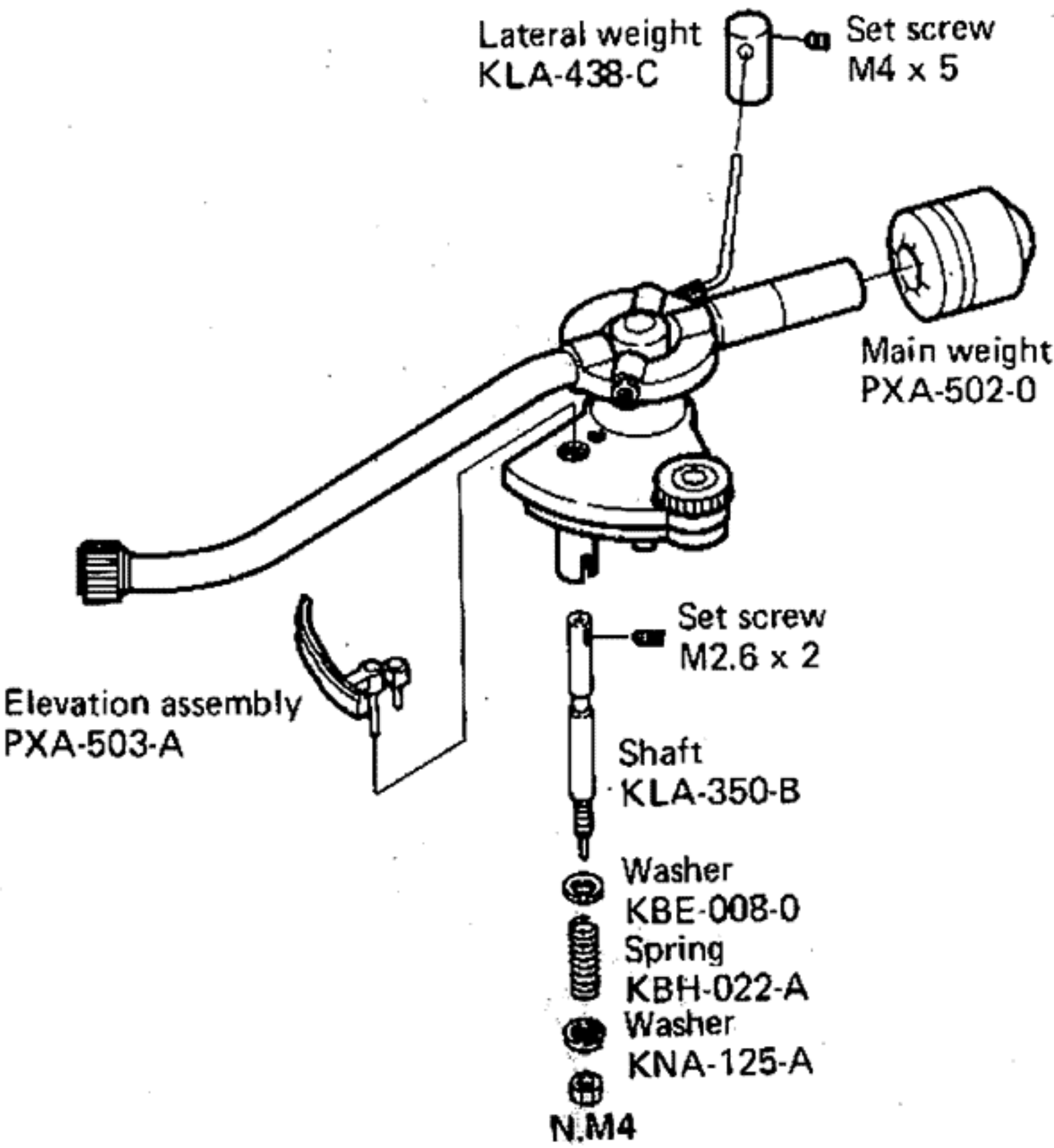


## 2. EXPLODED VIEW

### 2.1 MAIN PANEL NOTE: Parts indicated in green cannot be supplied.

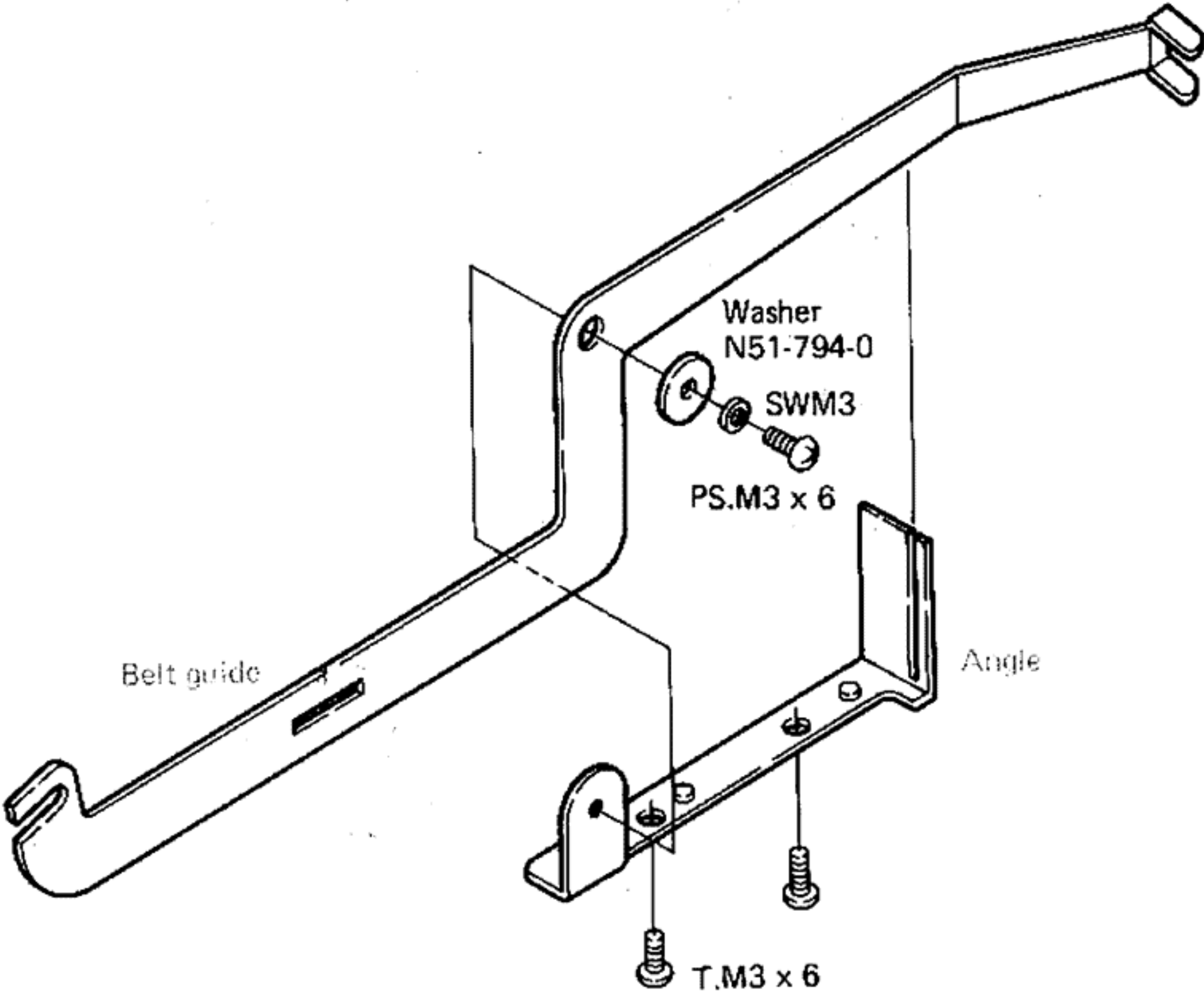


2.2 TONE ARM ASSEMBLY (PPD-520)



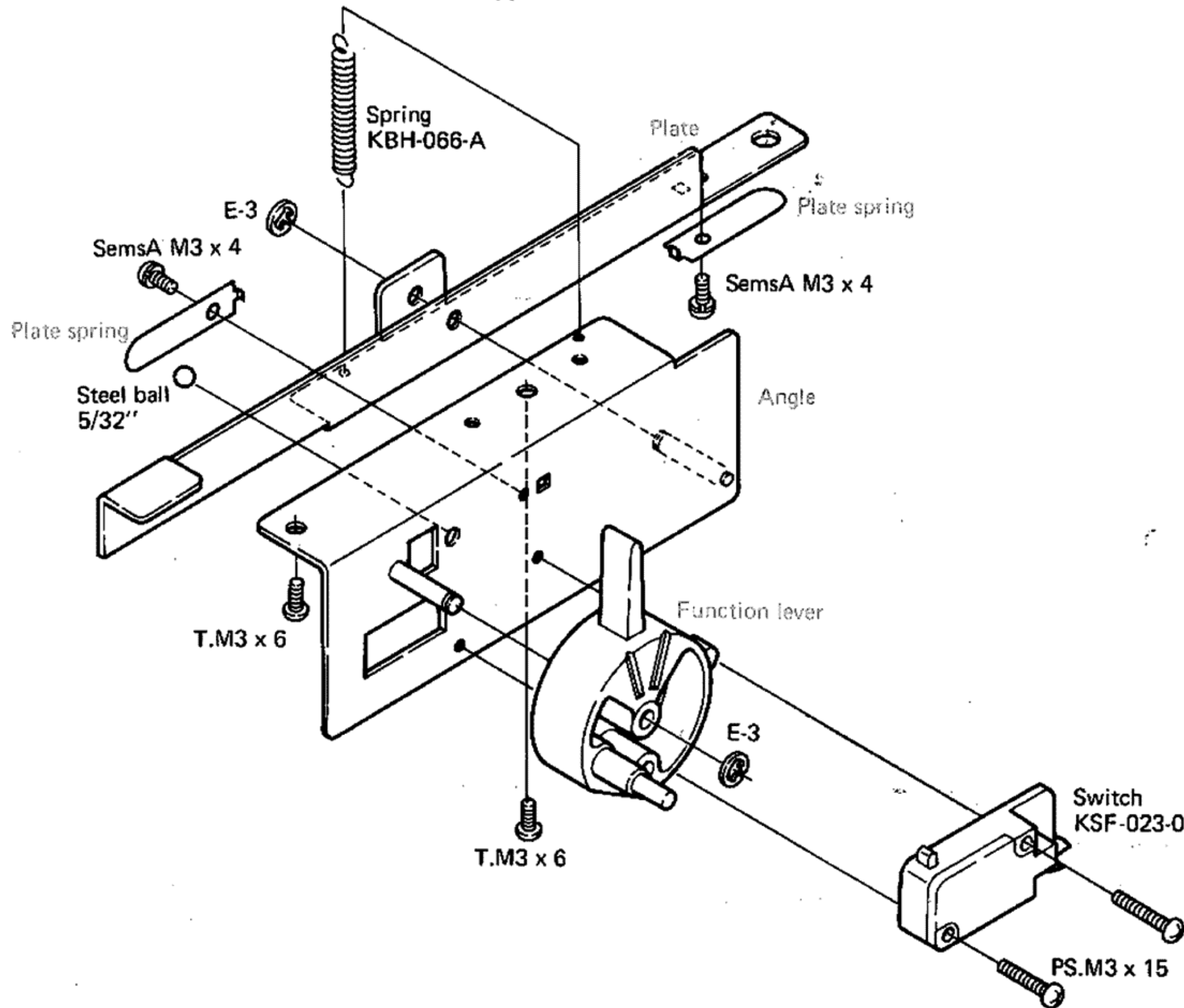
2.3 BELT GUIDE ASSEMBLY (KXA-093)

NOTE: Parts indicated in green cannot be supplied.



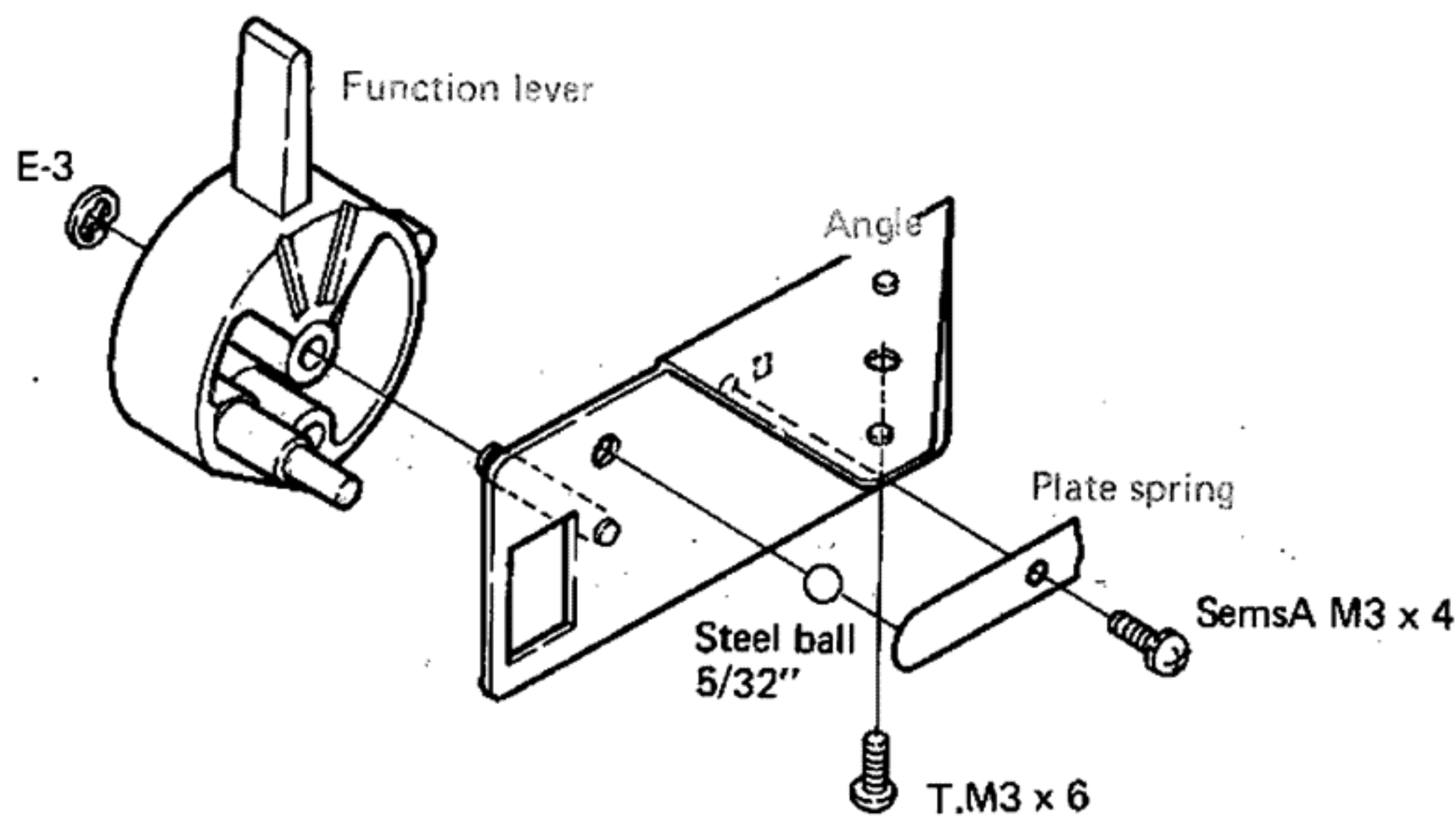
2.4 FUNCTION LEVER ASSEMBLY (PXA-005)

NOTE: Parts indicated in green cannot be supplied.



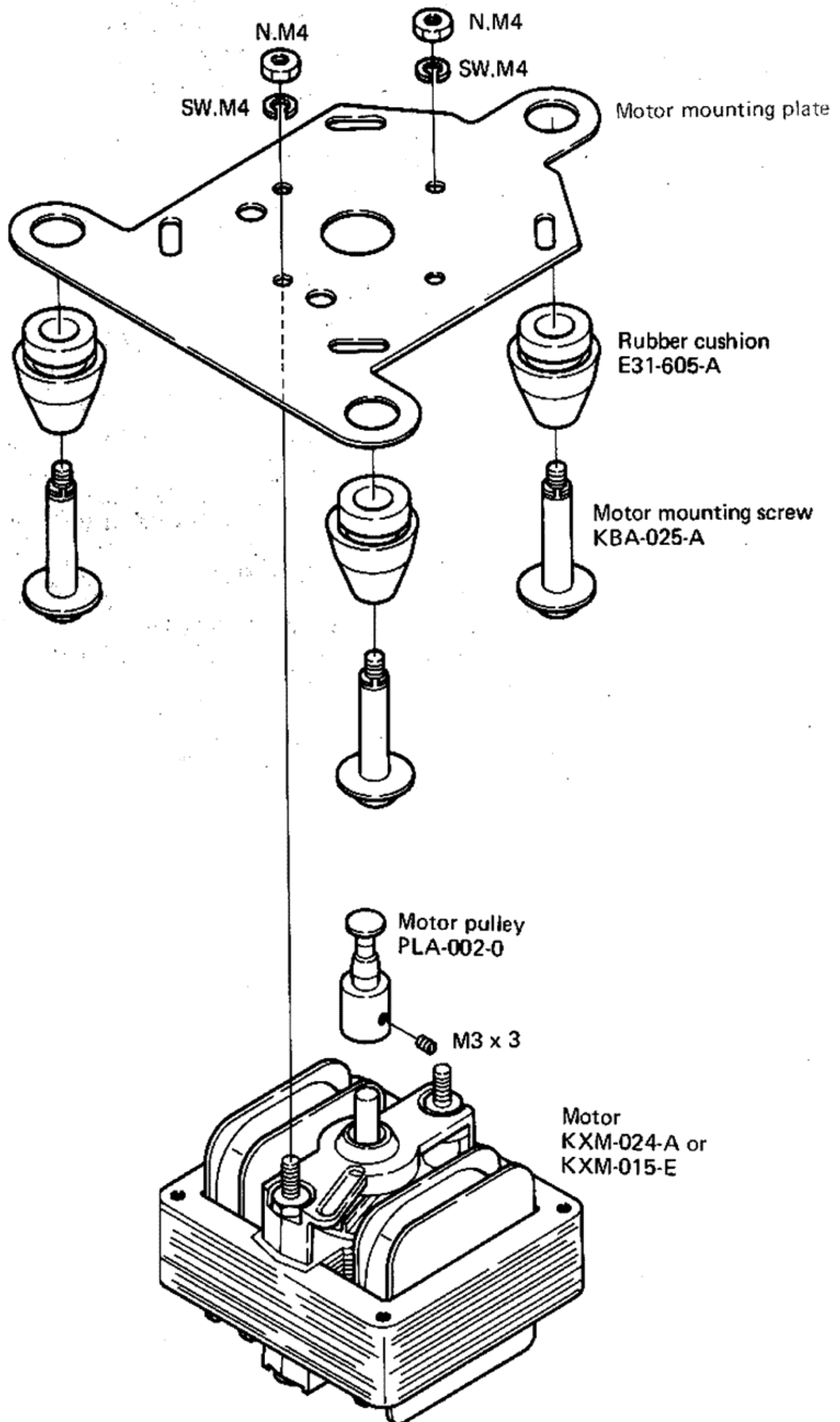
2.5 SPEED SELECTOR ASSEMBLY (KXA-296)

NOTE: Parts indicated in green cannot be supplied.



## 2.6 MOTOR

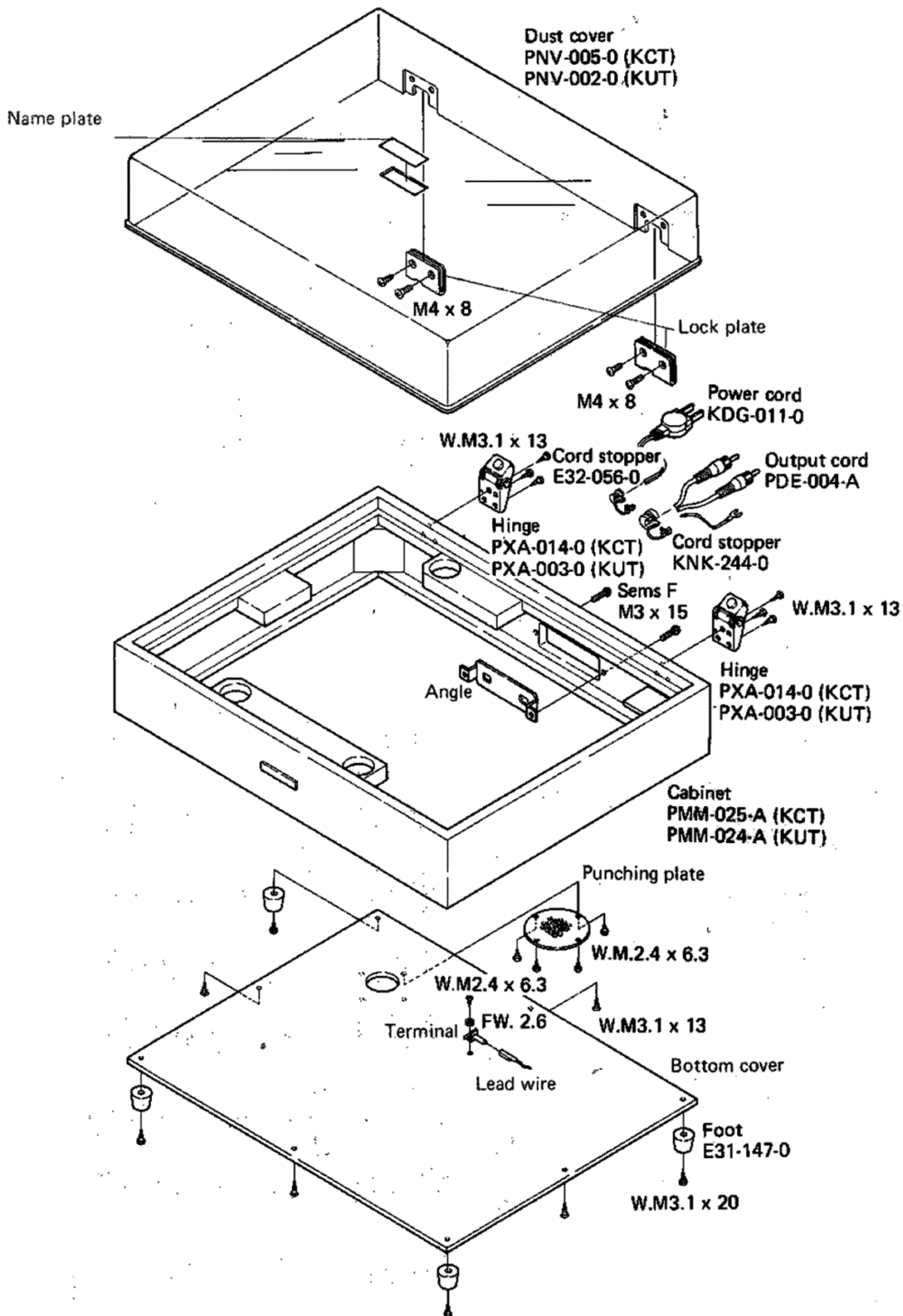
NOTE: Parts indicated in green cannot be supplied.





## 2.7 CABINET

NOTE: Parts indicated in green cannot be supplied.



## 2.8 PACKING METHOD

NOTE: Parts indicated in green cannot be supplied.

Operating instructions  
PRB-019-0

Upper board  
KHC-069-0

Ring

Vinyl bag  
345 x 395 x 0.05t  
Card board  
H52-632-0

Screw  
KBA-044-0  
(5mm)  
KBA-045-0  
(15mm)  
B11-657-D  
(11.5 mm)  
Washer  
B23-642-A  
Nut  
B71-653-A

Rubber mat

Cover

Transit screw  
KBC-001-0

Cramp caution card  
PRW-003-0

Arm protector (L)

Fiber washer  
M3A

Vinyl bag  
H56-603-0

Screwdriver  
KEX-002-A

Lubricator  
KEM-001-A

EP adaptor  
N93-603-A

Subweight  
KLA-494-A

Arm protector (R)

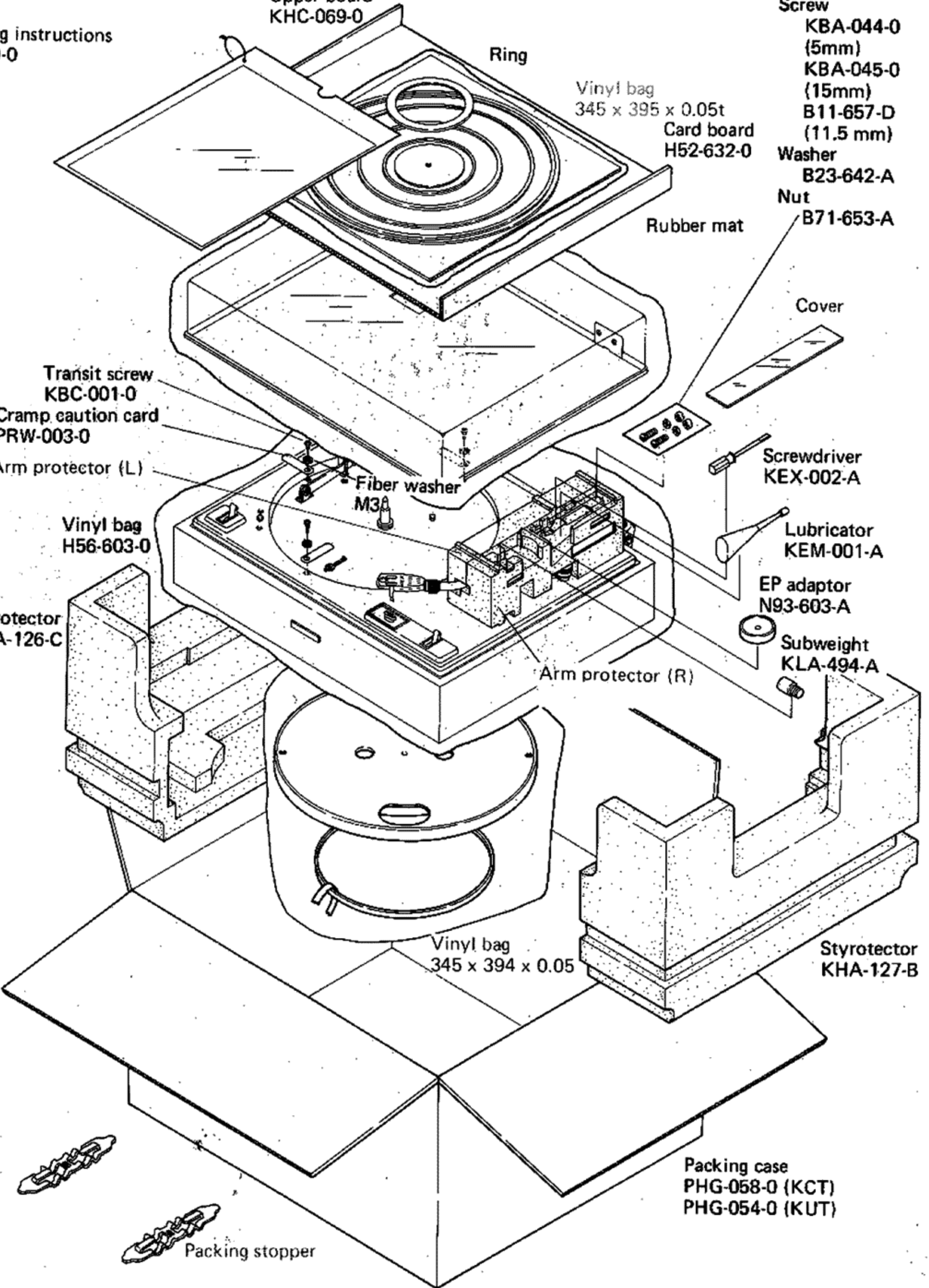
Styrotector  
KHA-126-C

Styrotector  
KHA-127-B

Vinyl bag  
345 x 394 x 0.05

Packing case  
PHG-058-0 (KCT)  
PHG-054-0 (KUT)

Packing stopper



**PIONEER ELECTRONIC CORPORATION**

4-1, 1-Chôme, Meguro, Meguro-ku, Tokyo 153, Japan

**U.S. PIONEER ELECTRONICS CORPORATION**

75 Oxford Drive, Moonachie, New Jersey 07074, U.S.A.

**PIONEER ELECTRONIC (EUROPE) N.V.**

Meir-Center Meir 21, 2000 Antwerp, Belgium

**PIONEER ELECTRONICS AUSTRALIA PTY. LTD.**

256-8 City Road, South Melbourne, Victoria 3205, Australia

APR. 1975

