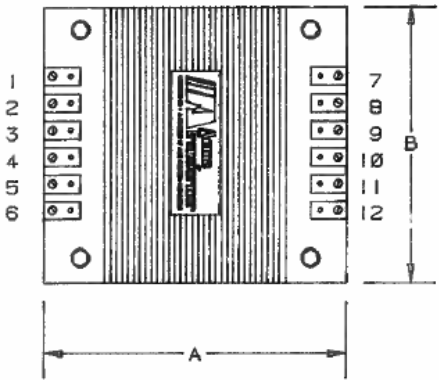
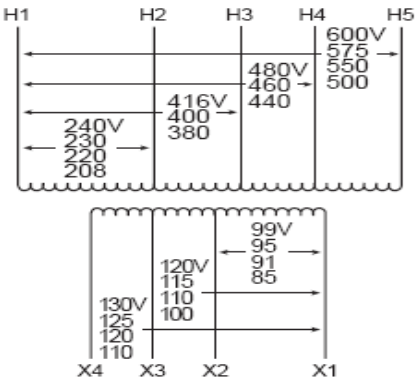
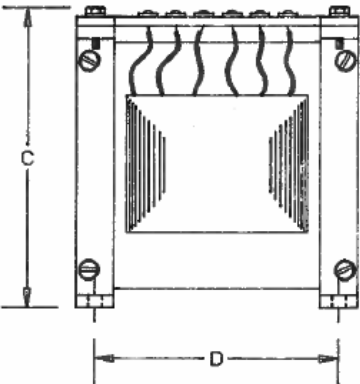
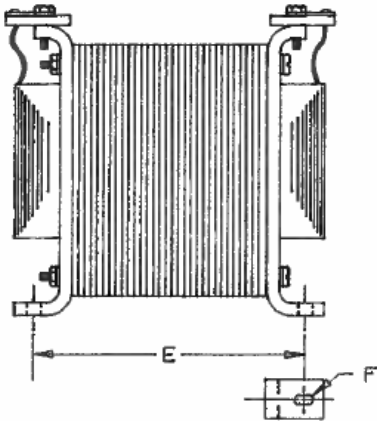


Revisions



- NOTES:
- 1. FOR TA-2-53929 TERMINAL POSITIONS WILL BE 2,3,4,5, AND 8,9,10,11.
 - 2. FOR TA-2-54525 TERMINAL POSITIONS WILL BE 2,3,4,5,8, AND 7,8,9,10,11.
 - 3. FOR TA-2-81202 TERMINAL POSITIONS WILL BE 2,3,5,6, AND 7,8,9,10,11.



VA	CATALOG NUMBER	VOLTAGE		WIRING DIAGRAM	WEIGHT	PHASE	FREQ.
		HIGH	LOW				
2000	TA-2-81202	240/416/480/600	99/120/130		55 Lbs	1φ	60 Hz

Winding Rise:	80°C
Insulation:	130°C
Windings:	CU

TYPICAL PERFORMANCE DATA

Standards:	UL/CSA	Markings:	
------------	--------	-----------	--

Industrial Control Transformer

Typical Efficiency:	
Full Load Losses	
No Load Losses	

A	B	C	D	E	F				
7.45	7.50	7.66	6.50	6.12	.41x.81				



Type No.

Date: March 12, 2010